

**WATEROUS CX 1500 GPM PUMP
(HUSKY 3 PLUMBING)**

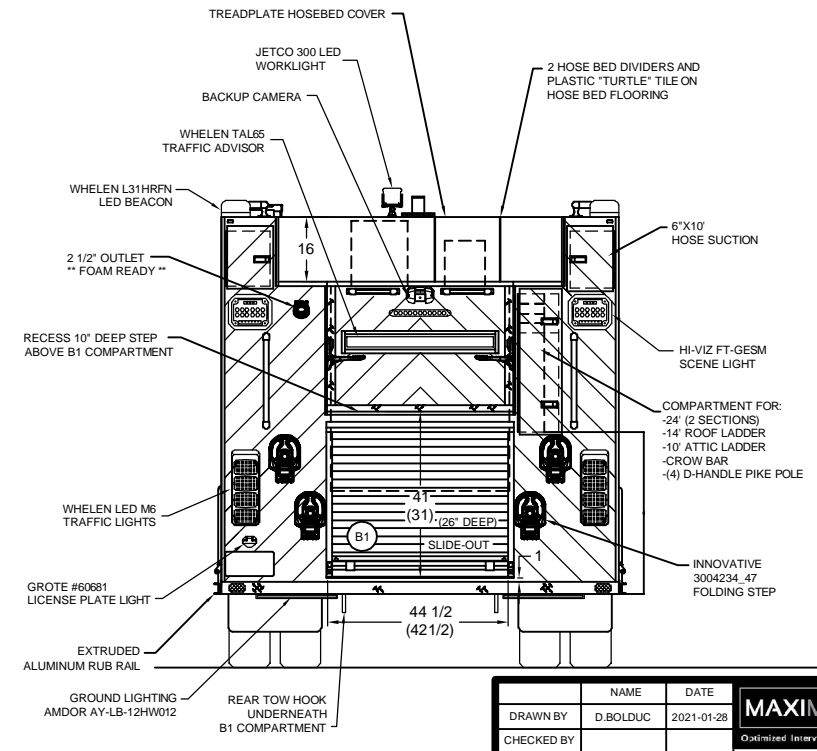
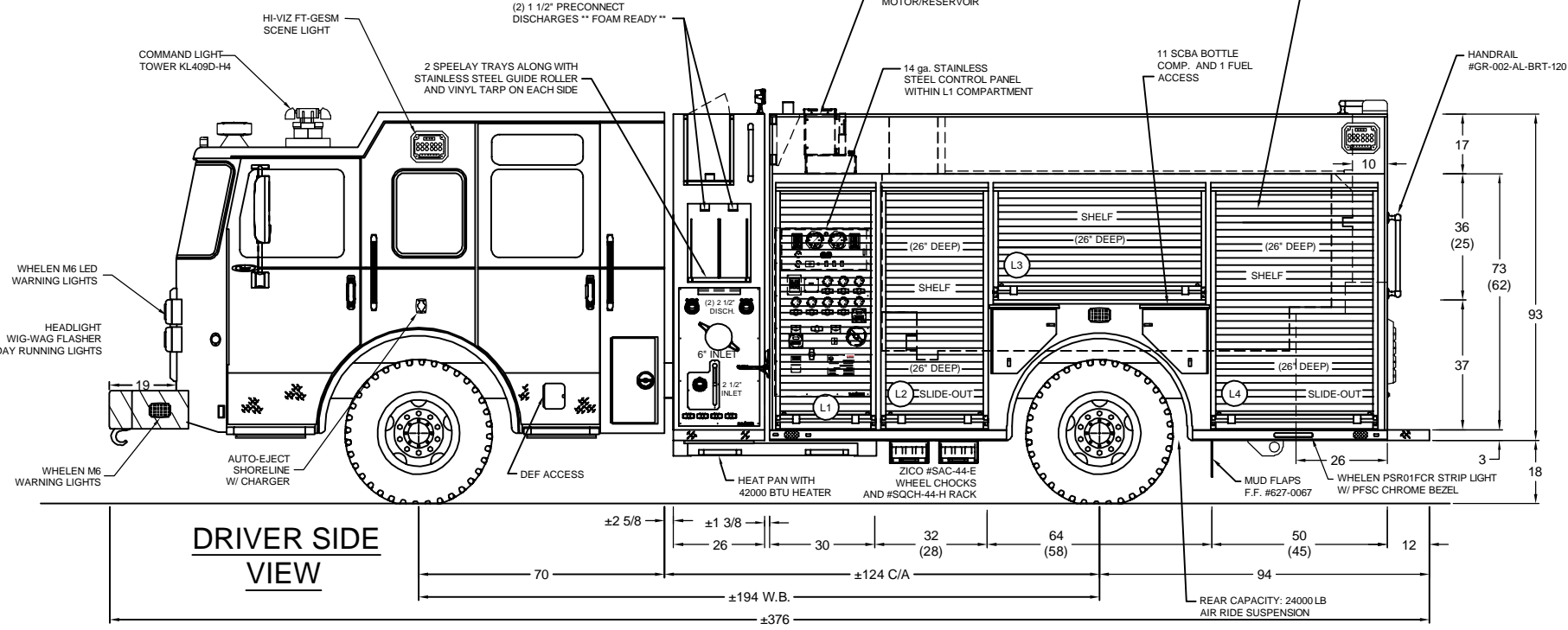
**1000 USG WATER / 30 USG FOAM
(840 IMP.) (25 IMP.)**

NOTES:
 ** (2) LUMABAR LIGHTING **
 IN EACH COMPARTMENT

 ** LUMABAR AY-9220-32-C-0 (1) **
 WITHIN PUMP HOUSE
 (PLUMBING AREA)

 ALL COMPARTMENTS: ZOLATONE FINISH 20-72

 NUMBERS BETWEEN PARENTHESIS: ESTIMATE OPENING



REAR VIEW

NAME	DATE	 MAXIMETAL INC. 9345, 25th AVENUE SAINT-GEORGES (QUEBEC) G6A 1L1	 CERTIFIED ISO 9001:20 PHONE NO.: 418 228-68 1 800 510-68 FAX NO.: 418 228-04
DRAWN BY	D.BOLDUC		
CHECKED BY		NOTE DIMENSIONS SHOWN ARE APPROXIMATE AND ARE SUBJECT TO MINOR DEVIATIONS AS MAY OCCUR OR BE NECESSARY IN CONSTRUCTION. MINOR DETAILS NOT SHOWN.	
TITLE: 2021 CEEE DEMO (Saber)		DRAWING NO: PRELIMINARY DRAWING	
PROJECT:		ANS I SCALE:	
ZONE	REV.	DESCRIPTION	DATE APPROVED

EN CAS DE DISPARITE ENTRE CE DESSIN ET LE DEVIS TECHNIQUE, LE DEVIS TECHNIQUE PREVAUDRA.
 IN CASE OF DISCREPANCY BETWEEN THIS DRAWING AND THE TECHNICAL SPECIFICATIONS, THE TECHNICAL SPECIFICATIONS SHALL PREVAIL.