

Velocity 105' Aerial



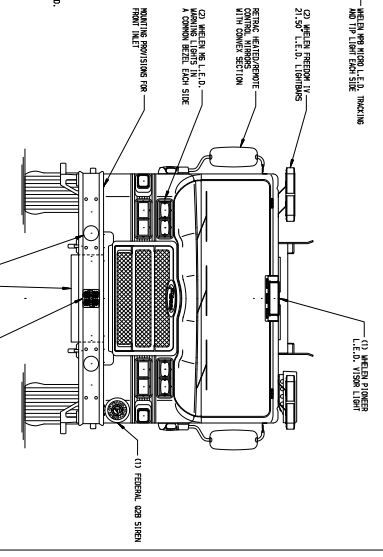
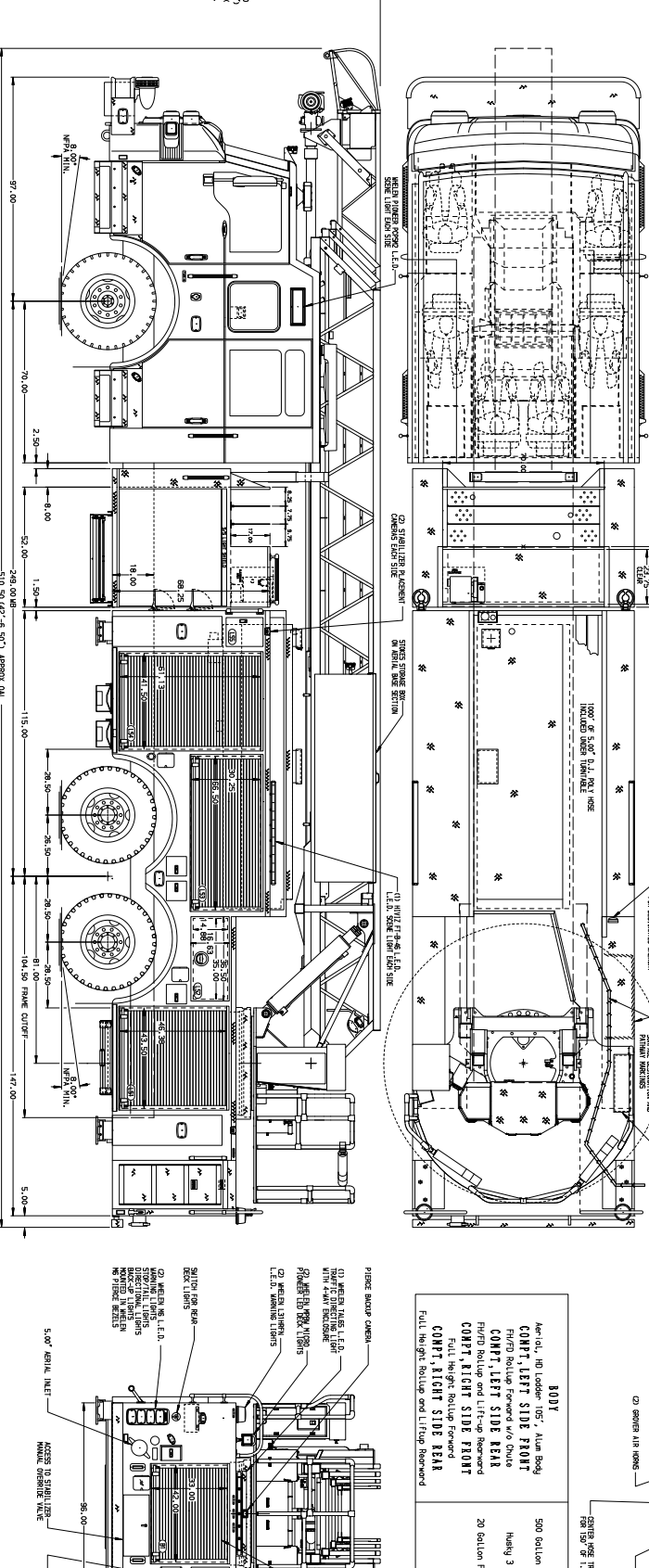
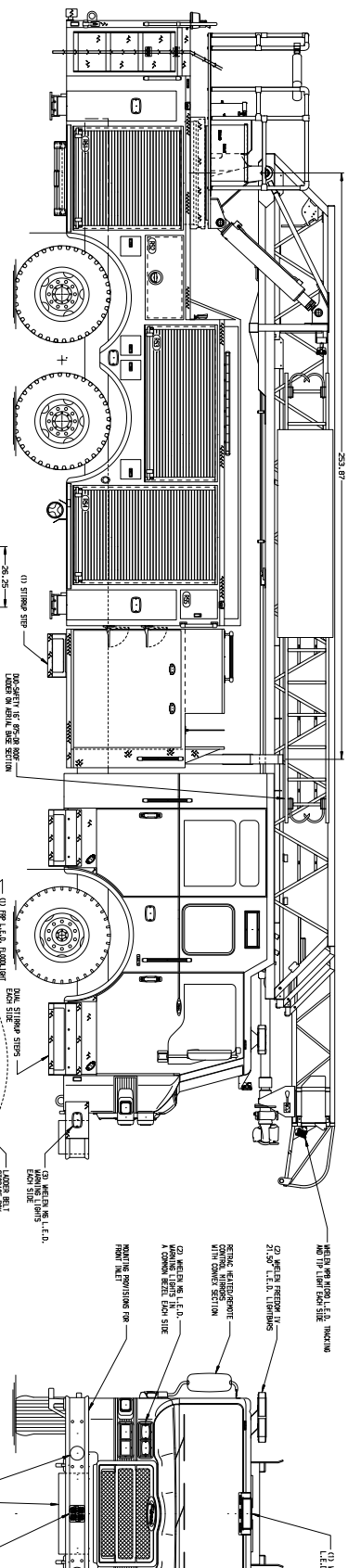
- Chassis: Velocity Tandem Axle
- Engine: Cummins x15 600 HP
- Transmission: Allison 5th Gen4500 EVS P, 6-speed, push button
- Front Axle: Oshkosh TAK-4, Non-drive, 22,500 lbs.
- Rear Axle: Meritor RT50-160, 52,000 lbs.
- Front Wheels: Alcoa Aluminum 22.5" x 12.25"
- Rear Wheels: Alcoa Aluminum 22.5" x 8.25"
- Bumper: 19" extended
- 500 US gallon Poly water tank
- Waterous 2,000 GPM pump
- Foam system: Husky 3
- Seating capacity: 6 seats



Please call for more information and pricing
Stock No. 34622

Providing expert truck equipment solutions across Canada
comemerg.ca 1-800-665-6126

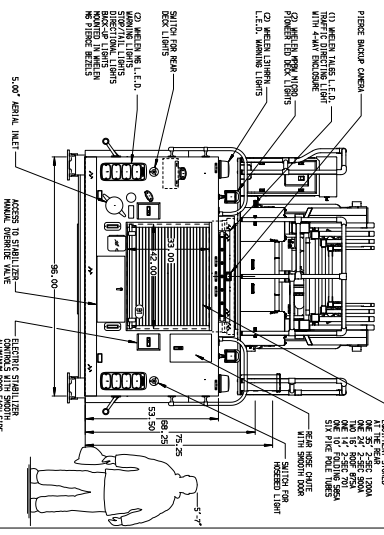
Vancouver - Surrey - Calgary - Edmonton - Regina - Winnipeg - Woodstock - Quebec



BODY
 Max. dia. 140 inches - 105" Alum Body
COUNT, LEFT SIDE FRONT
 Front Rollup Forward w/6 Drive
COUNT, LEFT SIDE REAR
 Front Rollup and Lift-up Forward
COUNT, RIGHT SIDE FRONT
COUNT, RIGHT SIDE REAR

WATER TANK
 500 gallon PUL Non-coded Poly Water Tank
FOAM SYSTEM
 Using 3 Single Agent Foam System
FOAM CELL
 20 gallon Foam Cell, Non-coded Water

FULL HEIGHT Rollup and Lift-up Forward



CHASSIS Model No. 105-700-2000 6500 lb. Capacity, 375 Engine		CAB 2010 Modern Air-Conditioning, 90 cu. ft. Capacity 19" Extended Stainless Steel		AUXILIARY EQUIPMENT 222 AUXILIARY EQUIPMENT ALLISON 500 Series, 4500 EHP P		TRANSMISSION Allison 500 Series, 4500 EHP P		PARADE USE 52' Capacity, 2000 GPH Water Capacity 2000 GPH Water Capacity		CHASSIS LAYOUT CROSSMEMBERS, 1-130" x 4" x 1/4" CROSSMEMBERS, 2-30" x 4" x 1/4" SPECIFICATIONS: 1-130" x 4" x 1/4"		STABILITY Frontal Impact Protection (FIP)		SAFETY FIP (Frontal Impact Protection)		CUSTOMER APPROVAL DATE: _____ BY: _____		MANUFACTURING INC. JOB NO. 34622 SCALE: 1:24 DATE: 11/08/19	
NOTE: DIMENSIONS SHOWN ARE APPROXIMATE AND ARE SUBJECT TO MINOR DEVIATIONS AS MAY OCCUR OR BE NECESSARY IN CONSTRUCTION. HINDER DETAILS NOT SHOWN.		1. SEE 130" WIDTH WITH 28" PAIRING AND 24" RADIUS TURNING CLEARANCE SHOWN FOR FRONT OF CAB. 2. SEE 130" WIDTH WITH 28" PAIRING AND 24" RADIUS TURNING CLEARANCE SHOWN FOR REAR OF CAB. 3. SEE 130" WIDTH WITH 28" PAIRING AND 24" RADIUS TURNING CLEARANCE SHOWN FOR REAR OF CAB. 4. SEE 130" WIDTH WITH 28" PAIRING AND 24" RADIUS TURNING CLEARANCE SHOWN FOR REAR OF CAB. 5. SEE 130" WIDTH WITH 28" PAIRING AND 24" RADIUS TURNING CLEARANCE SHOWN FOR REAR OF CAB. 6. SEE 130" WIDTH WITH 28" PAIRING AND 24" RADIUS TURNING CLEARANCE SHOWN FOR REAR OF CAB. 7. SEE 130" WIDTH WITH 28" PAIRING AND 24" RADIUS TURNING CLEARANCE SHOWN FOR REAR OF CAB. 8. SEE 130" WIDTH WITH 28" PAIRING AND 24" RADIUS TURNING CLEARANCE SHOWN FOR REAR OF CAB. 9. SEE 130" WIDTH WITH 28" PAIRING AND 24" RADIUS TURNING CLEARANCE SHOWN FOR REAR OF CAB. 10. SEE 130" WIDTH WITH 28" PAIRING AND 24" RADIUS TURNING CLEARANCE SHOWN FOR REAR OF CAB. 11. SEE 130" WIDTH WITH 28" PAIRING AND 24" RADIUS TURNING CLEARANCE SHOWN FOR REAR OF CAB.		12. SEE 130" WIDTH WITH 28" PAIRING AND 24" RADIUS TURNING CLEARANCE SHOWN FOR REAR OF CAB. 13. SEE 130" WIDTH WITH 28" PAIRING AND 24" RADIUS TURNING CLEARANCE SHOWN FOR REAR OF CAB. 14. SEE 130" WIDTH WITH 28" PAIRING AND 24" RADIUS TURNING CLEARANCE SHOWN FOR REAR OF CAB. 15. SEE 130" WIDTH WITH 28" PAIRING AND 24" RADIUS TURNING CLEARANCE SHOWN FOR REAR OF CAB.		16. SEE 130" WIDTH WITH 28" PAIRING AND 24" RADIUS TURNING CLEARANCE SHOWN FOR REAR OF CAB. 17. SEE 130" WIDTH WITH 28" PAIRING AND 24" RADIUS TURNING CLEARANCE SHOWN FOR REAR OF CAB. 18. SEE 130" WIDTH WITH 28" PAIRING AND 24" RADIUS TURNING CLEARANCE SHOWN FOR REAR OF CAB. 19. SEE 130" WIDTH WITH 28" PAIRING AND 24" RADIUS TURNING CLEARANCE SHOWN FOR REAR OF CAB. 20. SEE 130" WIDTH WITH 28" PAIRING AND 24" RADIUS TURNING CLEARANCE SHOWN FOR REAR OF CAB.		21. SEE 130" WIDTH WITH 28" PAIRING AND 24" RADIUS TURNING CLEARANCE SHOWN FOR REAR OF CAB. 22. SEE 130" WIDTH WITH 28" PAIRING AND 24" RADIUS TURNING CLEARANCE SHOWN FOR REAR OF CAB. 23. SEE 130" WIDTH WITH 28" PAIRING AND 24" RADIUS TURNING CLEARANCE SHOWN FOR REAR OF CAB. 24. SEE 130" WIDTH WITH 28" PAIRING AND 24" RADIUS TURNING CLEARANCE SHOWN FOR REAR OF CAB. 25. SEE 130" WIDTH WITH 28" PAIRING AND 24" RADIUS TURNING CLEARANCE SHOWN FOR REAR OF CAB.		26. SEE 130" WIDTH WITH 28" PAIRING AND 24" RADIUS TURNING CLEARANCE SHOWN FOR REAR OF CAB. 27. SEE 130" WIDTH WITH 28" PAIRING AND 24" RADIUS TURNING CLEARANCE SHOWN FOR REAR OF CAB. 28. SEE 130" WIDTH WITH 28" PAIRING AND 24" RADIUS TURNING CLEARANCE SHOWN FOR REAR OF CAB. 29. SEE 130" WIDTH WITH 28" PAIRING AND 24" RADIUS TURNING CLEARANCE SHOWN FOR REAR OF CAB. 30. SEE 130" WIDTH WITH 28" PAIRING AND 24" RADIUS TURNING CLEARANCE SHOWN FOR REAR OF CAB.		31. SEE 130" WIDTH WITH 28" PAIRING AND 24" RADIUS TURNING CLEARANCE SHOWN FOR REAR OF CAB. 32. SEE 130" WIDTH WITH 28" PAIRING AND 24" RADIUS TURNING CLEARANCE SHOWN FOR REAR OF CAB. 33. SEE 130" WIDTH WITH 28" PAIRING AND 24" RADIUS TURNING CLEARANCE SHOWN FOR REAR OF CAB. 34. SEE 130" WIDTH WITH 28" PAIRING AND 24" RADIUS TURNING CLEARANCE SHOWN FOR REAR OF CAB. 35. SEE 130" WIDTH WITH 28" PAIRING AND 24" RADIUS TURNING CLEARANCE SHOWN FOR REAR OF CAB.		36. SEE 130" WIDTH WITH 28" PAIRING AND 24" RADIUS TURNING CLEARANCE SHOWN FOR REAR OF CAB. 37. SEE 130" WIDTH WITH 28" PAIRING AND 24" RADIUS TURNING CLEARANCE SHOWN FOR REAR OF CAB. 38. SEE 130" WIDTH WITH 28" PAIRING AND 24" RADIUS TURNING CLEARANCE SHOWN FOR REAR OF CAB. 39. SEE 130" WIDTH WITH 28" PAIRING AND 24" RADIUS TURNING CLEARANCE SHOWN FOR REAR OF CAB. 40. SEE 130" WIDTH WITH 28" PAIRING AND 24" RADIUS TURNING CLEARANCE SHOWN FOR REAR OF CAB.		41. SEE 130" WIDTH WITH 28" PAIRING AND 24" RADIUS TURNING CLEARANCE SHOWN FOR REAR OF CAB. 42. SEE 130" WIDTH WITH 28" PAIRING AND 24" RADIUS TURNING CLEARANCE SHOWN FOR REAR OF CAB. 43. SEE 130" WIDTH WITH 28" PAIRING AND 24" RADIUS TURNING CLEARANCE SHOWN FOR REAR OF CAB. 44. SEE 130" WIDTH WITH 28" PAIRING AND 24" RADIUS TURNING CLEARANCE SHOWN FOR REAR OF CAB. 45. SEE 130" WIDTH WITH 28" PAIRING AND 24" RADIUS TURNING CLEARANCE SHOWN FOR REAR OF CAB.		46. SEE 130" WIDTH WITH 28" PAIRING AND 24" RADIUS TURNING CLEARANCE SHOWN FOR REAR OF CAB. 47. SEE 130" WIDTH WITH 28" PAIRING AND 24" RADIUS TURNING CLEARANCE SHOWN FOR REAR OF CAB. 48. SEE 130" WIDTH WITH 28" PAIRING AND 24" RADIUS TURNING CLEARANCE SHOWN FOR REAR OF CAB. 49. SEE 130" WIDTH WITH 28" PAIRING AND 24" RADIUS TURNING CLEARANCE SHOWN FOR REAR OF CAB. 50. SEE 130" WIDTH WITH 28" PAIRING AND 24" RADIUS TURNING CLEARANCE SHOWN FOR REAR OF CAB.	
CHASSIS DATA PIERCE FIELD UNIT APPLETON, WISCONSIN		DATE: _____ BY: _____		SCALE: 1:24 DATE: 11/08/19		PROJECT: _____ SCALE: _____		DATE: _____ BY: _____		PROJECT: _____ SCALE: _____		DATE: _____ BY: _____		PROJECT: _____ SCALE: _____					

11/08/19
 11:37 AM
 0.1x
 0.1x
 0.1x