

### Pumper Tanker on Freightliner M2 112



Chassis: 2021 Freightliner M2 112

GVWR: 64,000 lbs.

Body: Pumper-Tanker

Engine: Detroit DD 13, 505 hp

Transmission: Allison EVS 4000.

Pump: Paragon CX, 1500 gpm

Tank: Water – 3,000 US gallons

FoamPro 2001

Paragon Optimized Pumphouse Configuration

Titan Optimized Equipment System

Available for delivery July 2021

*Not exactly as shown*



Please call for more information and pricing

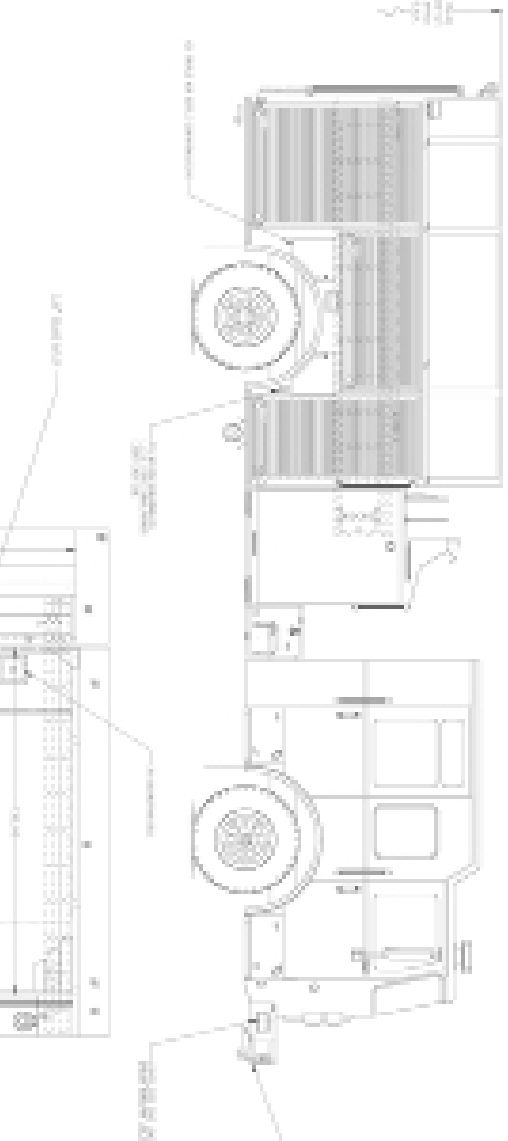
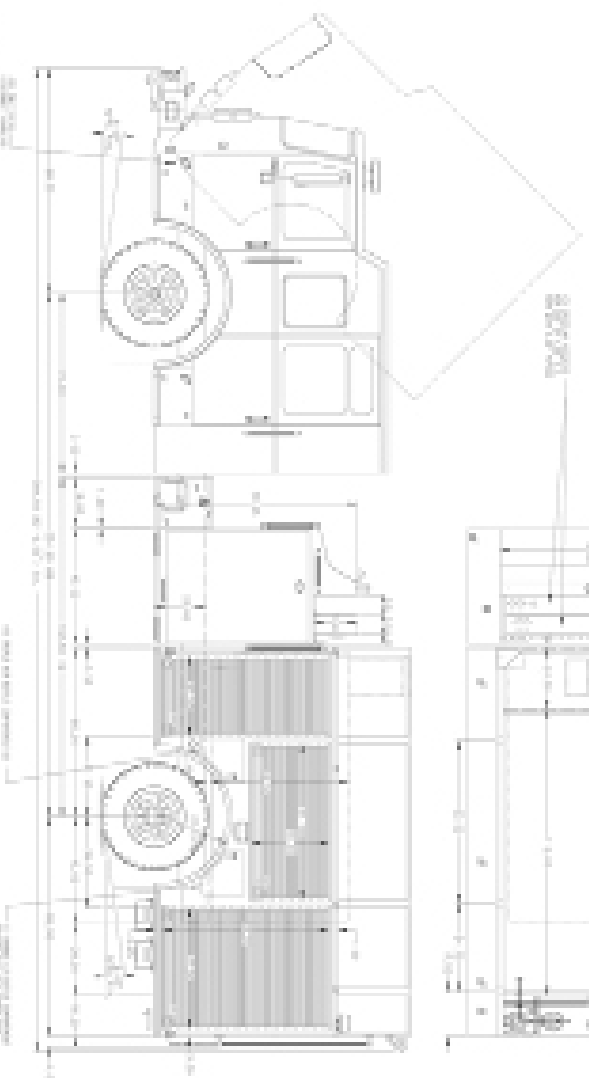
**Stock No.: INC2764**

Providing expert truck equipment solutions across Canada  
**comemerg.ca 1-800-665-6126**

**Vancouver - Surrey - Calgary - Edmonton - Regina - Winnipeg - Woodstock - Quebec**

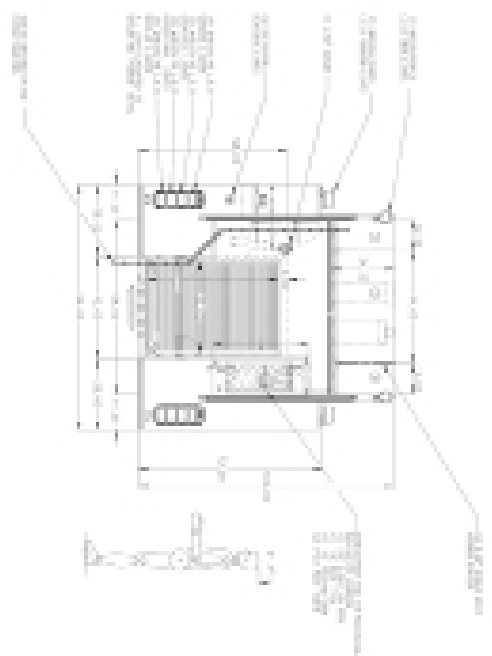
THIS DRAWING IS A PRELIMINARY DRAWING. IT IS NOT TO BE USED FOR CONSTRUCTION. IT IS SUBJECT TO CHANGE WITHOUT NOTICE.

ALUMINUM HOOD



REV	DATE	DESCRIPTION	BY	CHKD
1	10/10/10	INITIAL DESIGN	J. J. J.	J. J. J.
2	10/10/10	REVISED DESIGN	J. J. J.	J. J. J.
3	10/10/10	REVISED DESIGN	J. J. J.	J. J. J.
4	10/10/10	REVISED DESIGN	J. J. J.	J. J. J.
5	10/10/10	REVISED DESIGN	J. J. J.	J. J. J.
6	10/10/10	REVISED DESIGN	J. J. J.	J. J. J.
7	10/10/10	REVISED DESIGN	J. J. J.	J. J. J.
8	10/10/10	REVISED DESIGN	J. J. J.	J. J. J.
9	10/10/10	REVISED DESIGN	J. J. J.	J. J. J.
10	10/10/10	REVISED DESIGN	J. J. J.	J. J. J.

32353AD



32353AD

