

## Side Mount Pumper on Freightliner

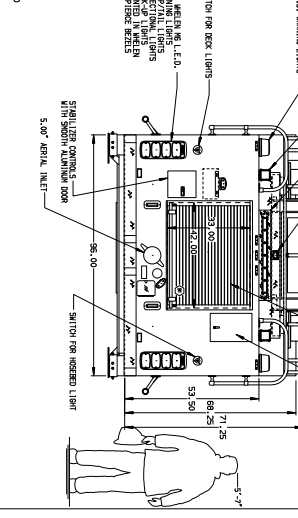
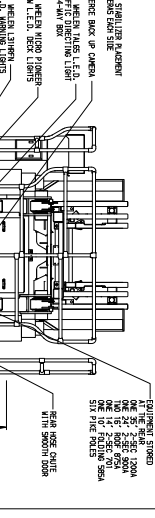
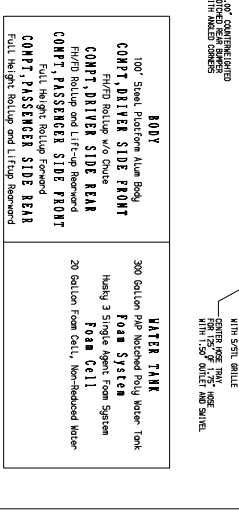
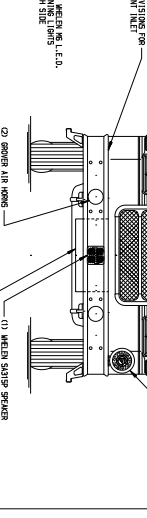
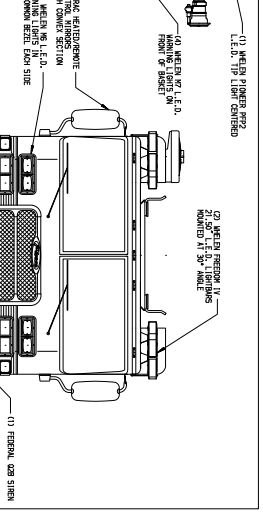
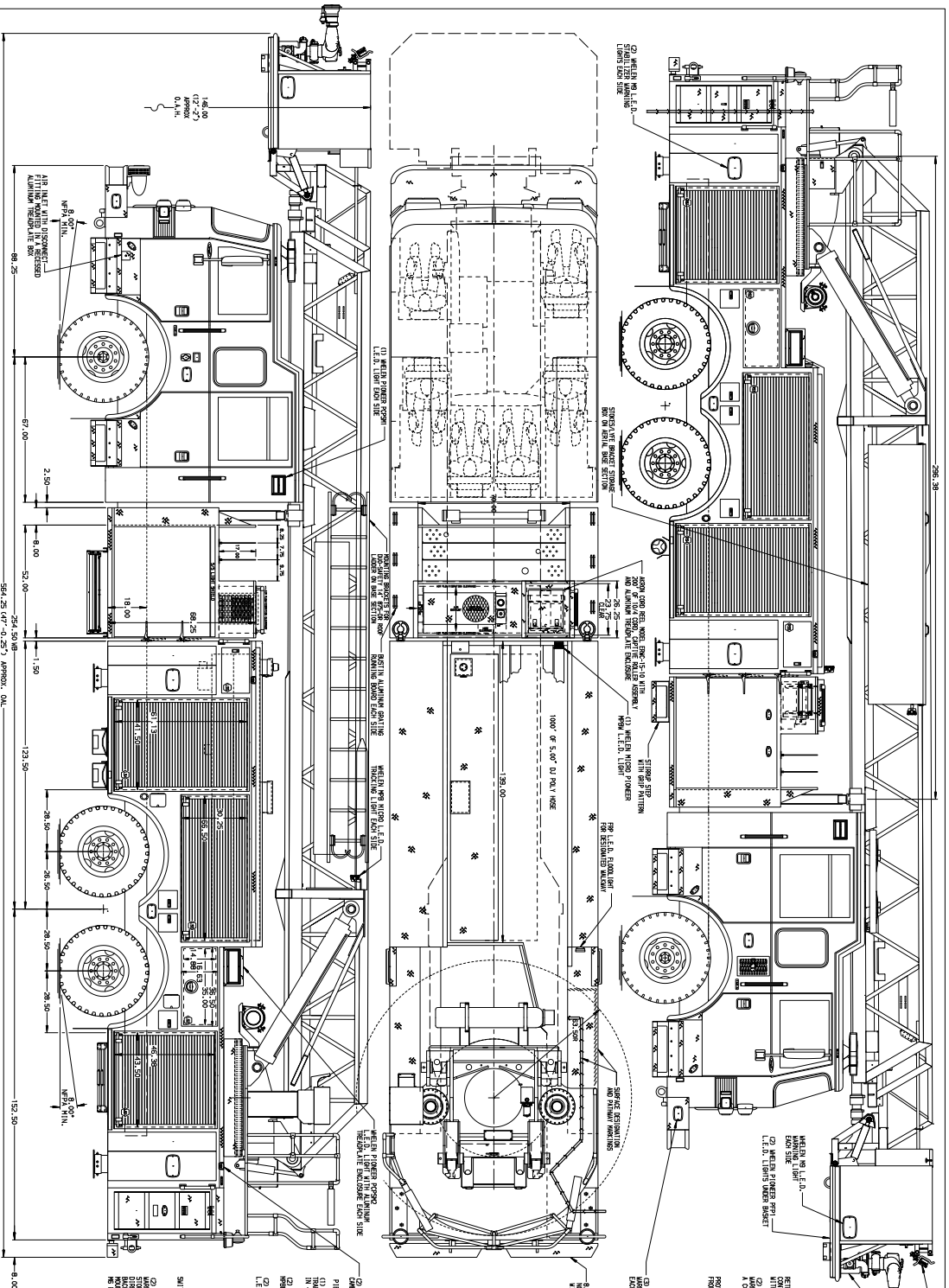


### FEATURES

- Chassis: Freightliner M2-106 4 door
- Engine: Cummins B6.7 360 HP
- Transmission: Allison 3000EVS 5 speed
- Front Axle: Non-drive, 12,000 lbs
- Rear Axle: 26,000 lbs.
- Front Wheels: Polished Aluminum
- Rear Wheels: Polished Aluminum-Steel
- Bumper: Chrome
- 1000 US gallon Poly water tank
- Hose bed standard capacity
- Hale DSD 1250 GPM pump
- Speedlays ahead of pump
- Foam system provisions
- Electrical System: Weldon V-Mux
- Seating Capacity: 5 seats
- Painted roll-up doors

**Stock No. 35537**

Providing expert truck equipment solutions across Canada  
**comemerg.ca 1-800-665-6126**



REV	DATE	BY	CHK	OR	REASON	XT NO.
1						
2						
3						
4						
5						
6						
7						
8						
9						
10						
11						
12						
13						
14						
15						
16						
17						
18						
19						
20						

**Pierce MANUFACTURING INC.**

**CHASSIS TITLE:** 100 AERIAL PLATFORM & BODY ASSEMBLY (GRAPHOOK)

**FOR APPLICATION:** PIERCE FIELD UNIT

**DWG NO.:** 32876AD

JOB NO.	SHEET	DATE
32876	1 OF 1	

Drawn by: [Name] Date: [Date]

Checked by: [Name] Date: [Date]

Approved by: [Name] Date: [Date]

Scale: 1" = 1'

Material: [Material]

Finish: [Finish]

Notes: [Notes]